



## Product Data Sheet

### DOW IntegraFlux™ Ultrafiltration Modules

Model SFP-2860XP, SFD-2860XP, SFP-2880XP and SFD-2880XP

#### Features

DOW IntegraFlux™ Ultrafiltration (UF) modules with XP fiber are made from high permeability, high mechanical strength, hollow fiber PVDF membranes. The modules provide excellent performance, industry leading membrane area with low energy and chemical consumption. IntegraFlux modules have the following general properties and characteristics:

- Up to 35% higher permeability than previous generation modules helping to improve operating efficiencies and productivity
- 0.03 μm nominal pore diameter for removal of bacteria, viruses, and particulates including colloids to protect downstream processes such as RO
- PVDF polymeric hollow fibers for high mechanical strength with excellent chemical resistance providing long membrane life and reliable operation
- Outside-In flow configuration allowing a wide range of solids in the feed water minimizing the need for pretreatment processes and reducing the backwash volume compared to Inside-Out configurations

These modules are an excellent choice for systems with capacities greater than 50 m<sup>3</sup>/hr (220 gpm). The shorter SFP-2860XP or SFD-2860XP modules are well suited for installations with limited height. Larger and longer, 8 inch diameter and 80 inch in length, the SFP-2880XP or SFD-2880XP modules offer a high effective membrane area combined with high permeability that provides the most economical and efficient membrane system design.

DOW IntegraFlux Ultrafiltration Modules can be used for a wide variety of treatment applications such as industrial and municipal wastewaters, surface water, and seawater.

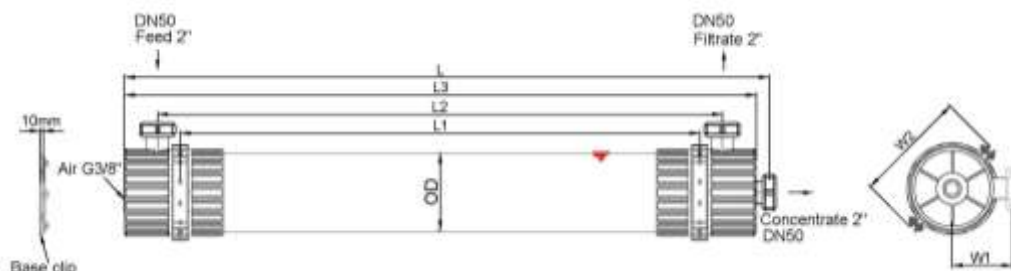


#### Product Specifications

Product	Type	Membrane Area		Volume		Weight (empty/water filled)	
		m <sup>2</sup>	ft <sup>2</sup>	liters	gallons	kg/lbs	kg/lbs
SFP-2860XP	Industrial	51	549	35	9.3	48/83	106/183
SFD-2860XP	NSF/ANSI 61 and 419	51	549	35	9.3	48/83	106/183
SFP-2880XP	Industrial	77	829	39	10.3	61/100	135/220
SFD-2880XP	NSF/ANSI 61 and 419	77	829	39	10.3	61/100	135/220

**Figure 1**

SFP-2860XP, SFD-2860XP, SFP-2880XP, and SFD-2880XP (8-inch diameter)



Product	Units	Length				Diameter	Width	
		L	L1	L2	L3	D	W1	W2
SFP-2860XP and SFD-2860XP	SI (mm)	1860±3	1500	1630±3	1820±3	225	180	342
	US (inch)	73.2±0.1	59.1	64.2±0.1	71.7±0.1	8.9	7.1	13.5
SFP-2880XP and SFD-2880XP	SI (mm)	2360±3	2000	2130±3	2320±3	225	180	342
	US (inch)	92.9±0.1	78.7	83.9±0.1	91.3±0.1	8.9	7.1	13.5

**Operating Limits**

	SI Units	US Units
Filtrate Flux (25°C)	40 – 110 l/m <sup>2</sup> hr	24 – 65 gfd
Flow Range Per Module <sup>1</sup>	2.0 – 8.5 m <sup>3</sup> /hr	8.8 – 37.4 gpm
Temperature	1 – 40°C	34 – 104°F
Maximum Inlet Module Pressure (20°C)	6.25 bar	90.65 psi
Maximum Operating TMP	2.1 bar	30.5 psi
Maximum Operating Air Scour Flow	12 Nm <sup>3</sup> /hr	7.1 scfm
Maximum Backwash Pressure	2.5 bar	36 psi
Operating pH	2 – 11	
Maximum NaOCl	2,000 mg/L	
Maximum Particle Size	300 µm	
Flow Configuration	Outside in, dead end flow	
Expected Filtrate Turbidity	≤ 0.1 NTU	
Expected Filtrate SDI	≤ 2.5	

<sup>1</sup> Flow range represents DOW™ Ultrafiltration SFP-2860XP, SFD-2860XP, SFP-2880XP, and SFP-2880XP Modules for filtrate flux range shown

**Important Information**

Proper start-up of an ultrafiltration system is essential to prepare the membranes for operating service and to prevent membrane damage. Following the proper start-up sequence also helps ensure that system operating parameters conform to design specifications so that system water quality and productivity goals can be achieved.

Before initiating system start-up procedures, membrane pretreatment, installation of the membrane modules, instrument calibration and other system checks should be completed.

Please refer to the [DOW™ UF Product Manual](#).

## Operation Guidelines

Avoid any abrupt pressure variations during start-up, shutdown, cleaning or other sequences to prevent possible membrane damage. Flush the ultrafiltration system to remove shipping solution prior to start-up. Remove residual air from the system prior to start-up. Manually start the equipment. Depending on the application, filtrate obtained from initial operations should be discarded.

Please refer to the [DOW™ UF Product Manual](#).

## General Information

- If operating limits and guidelines given in this bulletin are not strictly followed, the limited warranty will be null and void.
- To control biological growth during extended system shutdowns, it is recommended that storage solution be injected into the membrane modules.

Please refer to the [DOW UF Product Manual](#) and Technical Service Bulletins.

## Regulatory Note

NSF/ANSI 61 and 419 certified drinking water modules require specific conditioning procedures prior to producing potable water. Please refer to the product technical manual flushing section for specific procedures. Drinking water modules may be subjected to additional regulatory restrictions in some countries. Please check local regulatory guidelines and application status before use and sales.

## Product Stewardship

Dow has a fundamental concern for all who make, distribute, and use its products, and for the environment in which we live. This concern is the basis for our product stewardship philosophy by which we assess the safety, health, and environmental information on our products and then take appropriate steps to protect employee and public health and our environment. The success of our product stewardship program rests with each and every individual involved with Dow products - from the initial concept and research, to manufacture, use, sale, disposal, and recycle of each product.

## Customer Notice

Dow strongly encourages its customers to review both their manufacturing processes and their applications of Dow products from the standpoint of human health and environmental quality to ensure that Dow products are not used in ways for which they are not intended or tested. Dow personnel are available to answer your questions and to provide reasonable technical support. Dow product literature, including safety data sheets, should be consulted prior to use of Dow products. Current safety data sheets are available from Dow.

### DOW™ Ultrafiltration

For more information, call the Dow Water & Process Solutions business:

North America: 1-800-447-4369  
Latin America: (+55) 11-5188-9222  
Europe: +800-3-694-6367  
Italy: +800-783-825  
South Africa: +0800 99 5078  
Pacific: +800 7776 7776  
China: +400 889-0789  
[www.dowwaterandprocess.com](http://www.dowwaterandprocess.com)

Notice: The use of this product in and of itself does not necessarily guarantee the removal of cysts and pathogens from water. Effective cyst and pathogen reduction is dependent on the complete system design and on the operation and maintenance of the system.

Notice: No freedom from infringement of any patent owned by Dow or others is to be inferred. Because use conditions and applicable laws may differ from one location to another and may change with time, Customer is responsible for determining whether products and the information in this document are appropriate for Customer's use and for ensuring that Customer's workplace and disposal practices are in compliance with applicable laws and other governmental enactments. The product shown in this literature may not be available for sale and/or available in all geographies where Dow is represented. The claims made may not have been approved for use in all countries. Dow assumes no obligation or liability for the information in this document. References to "Dow" or the "Company" mean the Dow legal entity selling the products to Customer unless otherwise expressly noted. NO WARRANTIES ARE GIVEN; ALL IMPLIED WARRANTIES OF MERCHANTABILITY OR FITNESS FOR A PARTICULAR PURPOSE ARE EXPRESSLY EXCLUDED.

